

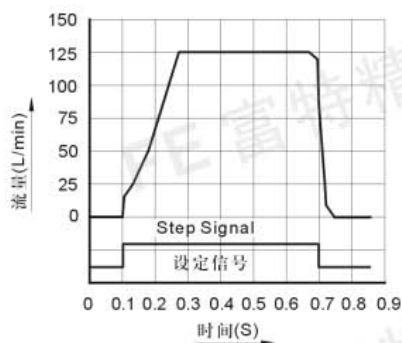


EFRDC-G03比例式压力流量复合阀

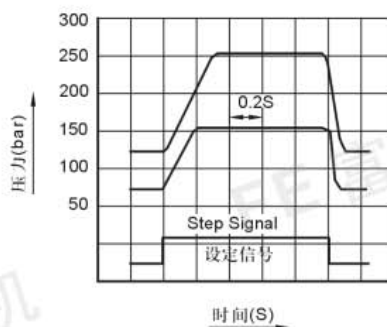
性能曲线

测试用油黏度: 35mm²/s 测试温度: 50°C(122°F)

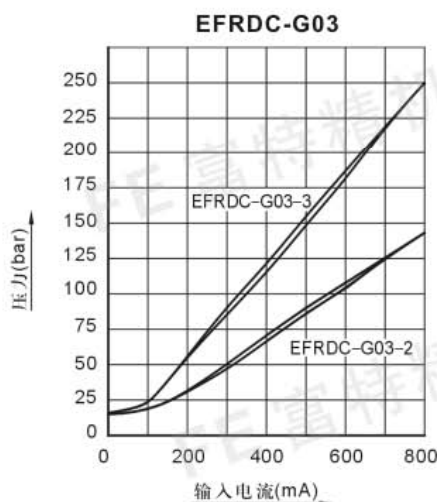
● 应答特性(流量控制)



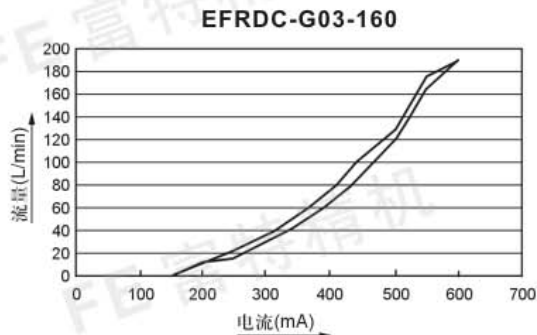
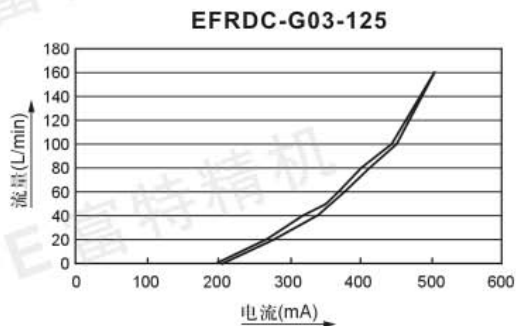
● 应答特性(压力控制)



● 输入电流-压力特性



● 输入电流-流量特性



A

B

C

D

E

比例阀

F

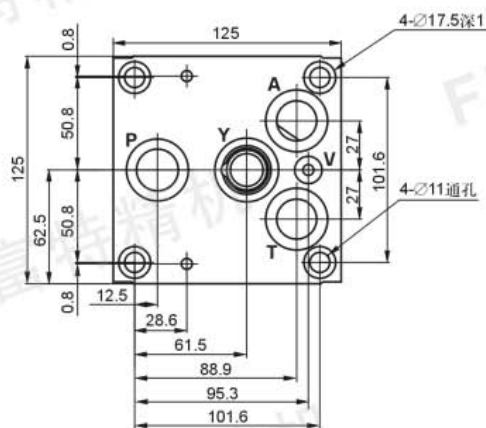
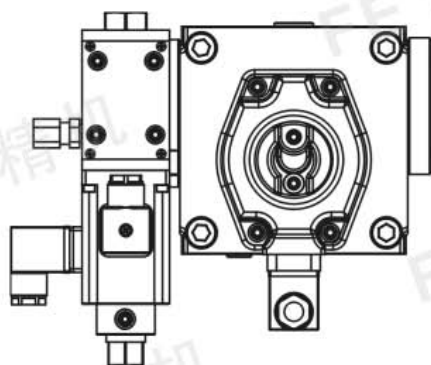
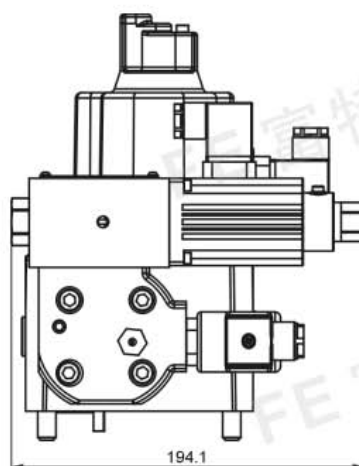
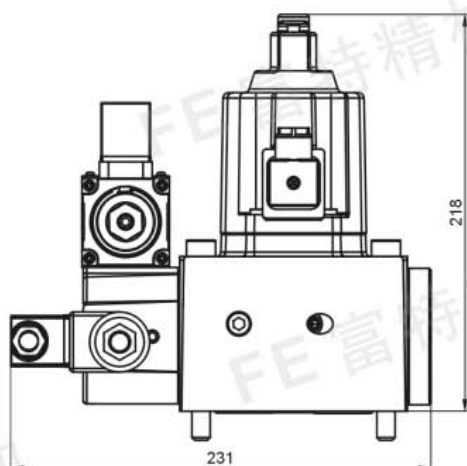


EFRDC-G03比例式压力流量复合阀

外形尺寸图

单位: mm

● EFRDC-G03



A

B

C

D

E

比

例

阀

F